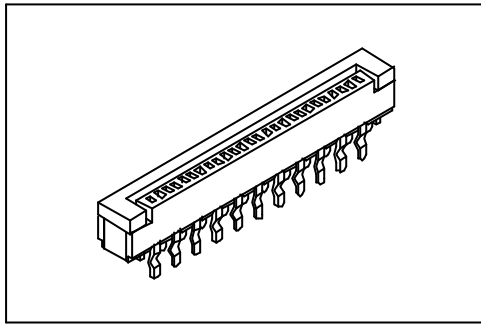


2434 Series

FFC/FPC Connector 1.0mm(0.039") ZIF Type



Features:

- * ZIF, Straight dip type.
- * Size 4 through 32 available.
- * For 0.30mm(0.0118") thick FFC/FPC.

Material:

Housing: High temperature housing UL94V-0 withstands IR and VPR soldering methods.

Contacts: Phosphor Bronze.

Leg: Brass

Plating: Tin plated.

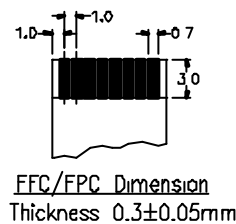
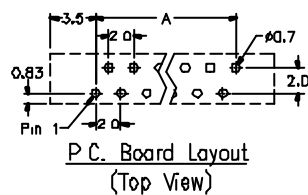
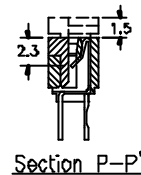
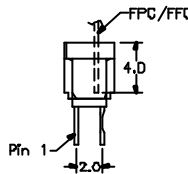
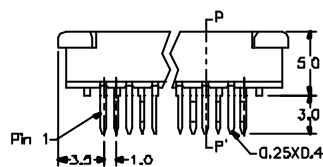
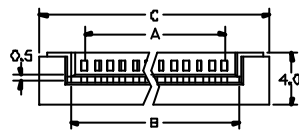
Electrical Characteristics:

Current Rating: 0.5 AMP.

Insulator Resistance: 100MΩ min. at DC 500V.

Contact Resistance: 20mΩ max. at DC 100mA.

Operating Temperature: -55°C ~ +85°C.



Position	4 Thru 32
Dimension	
A	(No. of Positions X 1.0)-1.0
B	(No. of Positions X 1.0)+1.2
C	(No. of Positions X 1.0)+6.0

Ordering information

2434- 32 I S
 Series No. of Pin Count T: Tin Plated S: Straight