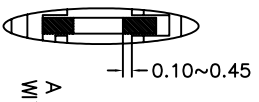
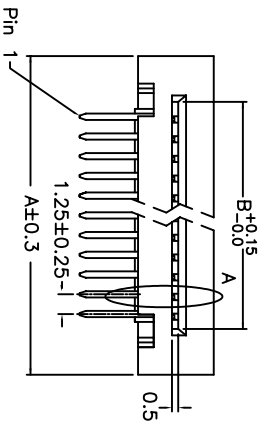


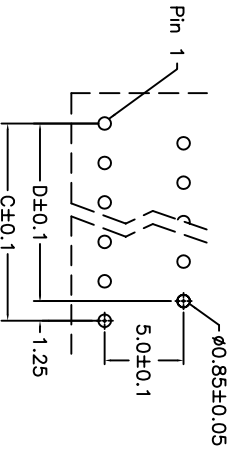
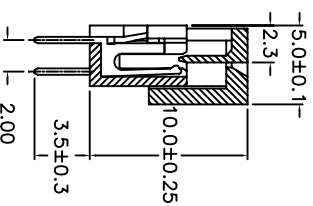
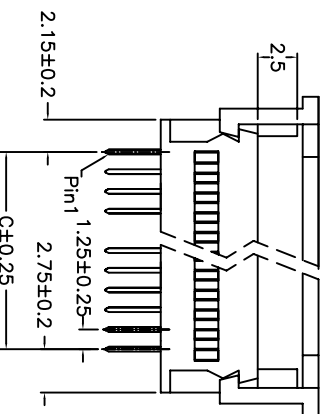
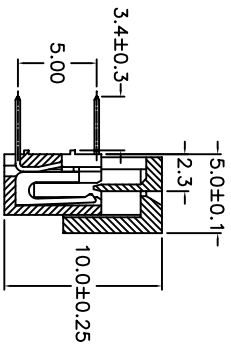
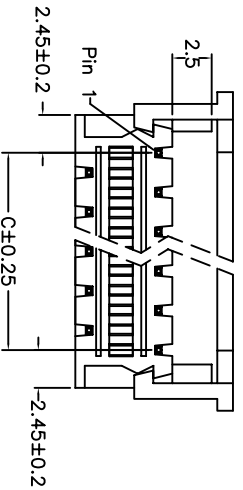
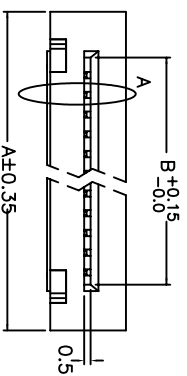
Position Dimension	1	2	3	4	5	6	7	8	9	10	11	12
A	3 Thru 40											
B	No. of Positions X 1.25+5.7											
C	No. of Positions X 1.25+1.57											
D	No. of Positions X 1.25-1.25											

(A7)

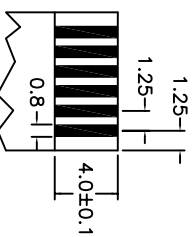
(A7)



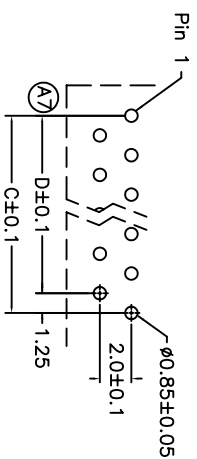
A VIEW WITHOUT COVER



P.C. Board Layout (Top View)



FFC/FPC Dimension Thickness 0.3±0.05mm



P.C. Board Layout (Top View)

2533-**-TR

2533-**-TS

Material:
Housing: 30% Glass filled PBT UL94V-0.
Contacts: Phosphor Bronze.
Plating: Tin plated.

Electrical Characteristics:
Current Rating: 1 AMP.
Insulator Resistance: 5000MΩmin. at DC 500V.
Contact Resistance: 20mΩmax. at DC 100mA.
Operating Temperature: -55°C~+105°C.

Tolerances	Drawn No.	Title:		UPPIN ELECTRONIC(KUNSHAN) CO., LTD.	
x = ±0.5	2533D02001	2533 Series	FFC/FPC Connector 1.25mm(0.049") ZIF Type		
.x = ±0.25					
.xx = ±0.13			SHEET 1/1 Ver. No. A8		
	Projection	Scale	P/N: 2533-**-TXU		
	Unit mm	1:1			
	Drawn By	Amy09/19'05			

REV.	SPECIFICATION	ECN NO.	APPD.
A7	增加P.C.板尺寸及电气特性	06/08/05	